

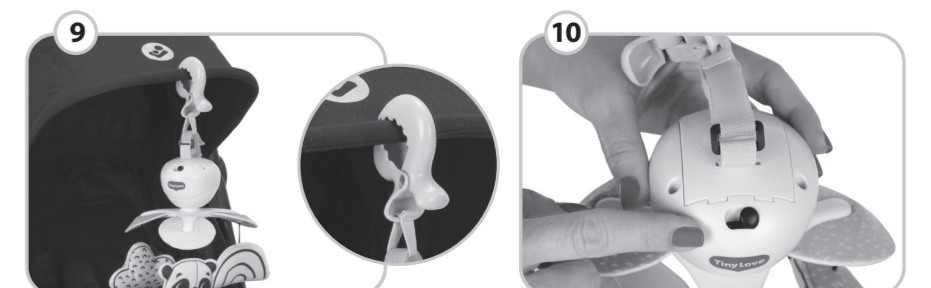
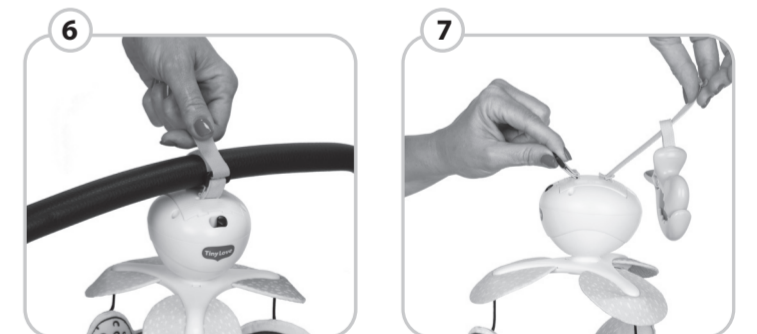
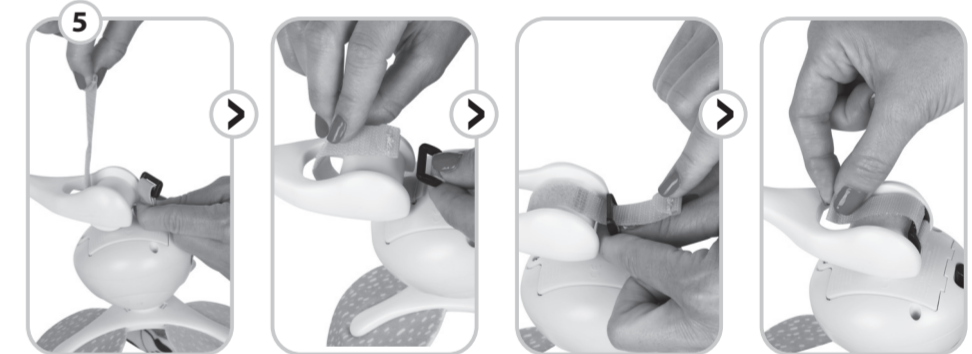
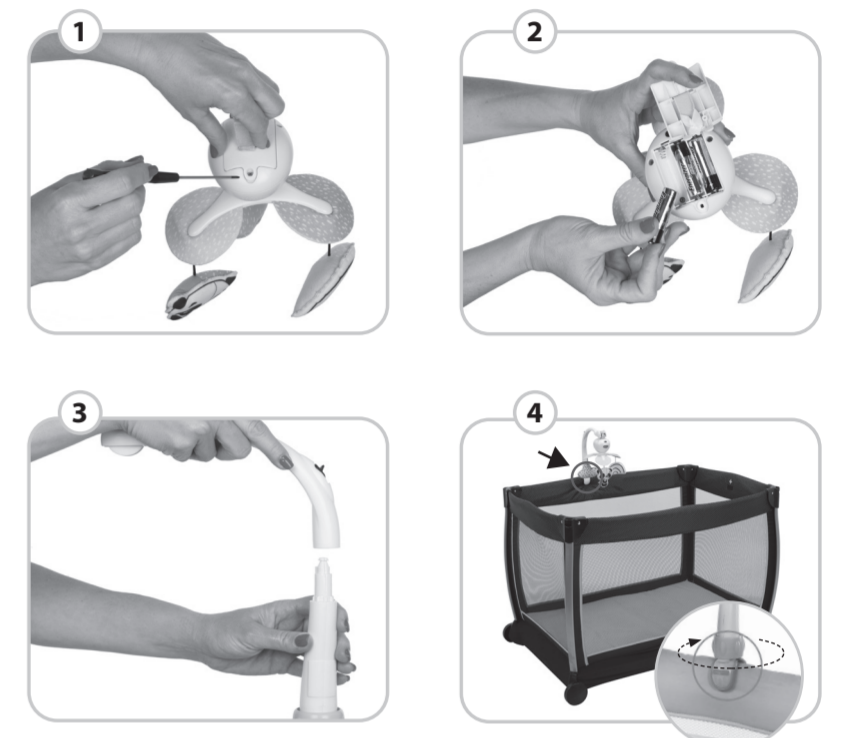
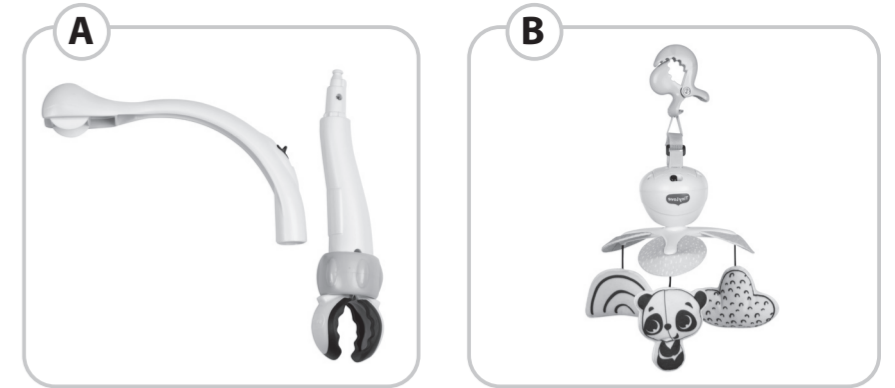
Tiny Love™

English

# Take-Along Mobile™

## Instruction Guide

Read all instructions before use. Keep these instructions for future use as they contain important information.



## Take-Along Mobile™

Meadow Days™  
130490E001, TO027

Tiny Princess Tales™  
130550E001, TO060

Magical Tales™  
130590E001, TO075

Treasure the Ocean™  
130700E001, TO1210700

Black & White Décor  
130810E001,  
TO153HBF0400



O-5m

E3055IS658 0F

Tiny Love™

For more developmental information and playing tips please visit:  
Pour de plus amples informations sur le développement et des conseils de jeu, rendez-vous sur:  
Para más información sobre el desarrollo y sugerencias de juego, visite:

[www.tinylove.com](http://www.tinylove.com)



©2023. Tiny Love LTD.  
[www.djgusa.com](http://www.djgusa.com) | (800) 544-1108  
[www.tinylove.com](http://www.tinylove.com)  
MADE IN CHINA.  
FABRIQUÉ EN CHINE.  
HECHO EN CHINA.

Styles and colors may vary.  
Les styles et les couleurs peuvent varier.  
Los estilos y los colores pueden variar.

Distributed by (distribué par) (distribuido por):  
Dorel Juvenile Group, Inc., 2525 State St.,  
Columbus, IN 47201-7494

Dorel Juvenile Canada, 2233 Argentinia Road, Suite  
110 Mississauga, Ontario, Canada L5N 2X7



E3055IS658 0F

### ⚠ WARNING

- Possible entanglement injury. Keep out of baby's reach.
- Remove the mobile from the crib or playpen when the baby begins to push up on his hands and knees.
- This toy is intended for visual stimulation and is not intended to be grasped by a child.
- Always attach all provided fasteners tightly to the crib or playpen according to the instructions. Check frequently.
- Do not add additional strings or straps to attach to the crib or playpen.
- Do not modify or alter this product in any way.
- Do not leave your children unattended for any time.
- IMPORTANT! We recommend attaching this toy to a crib side that is fixed and cannot move up or down.
- Adult assembly required.
- Philips screwdriver required (not included).
- Remove all packaging materials before use. Suffocation Hazard.

### Product Key

- A. Connector arm (2 parts)
- B. Mobile

### Battery Installation:

1. Loosen the battery compartment screw using a crosshead screwdriver (Fig. 1).
2. Open the battery compartment and insert three new AA (1.5V) alkaline batteries (Fig. 2). Match the (+) and (-) symbols according to the diagram in the battery compartment.
3. Position the battery compartment cover securely back in place and tighten with the screwdriver.

### This product can be used with:

1. Pack & Plays / travel cots and bassinets
2. Infant carrier
3. Strollers

### Attaching your Take-Along Mobile™ to your Pack & Play / travel cot or bassinet (using the 2-part connector arm)

1. Click together the 2 parts of the connector arm (Fig. 3).
2. Locate a hard sturdy edge of the Pack & Play / travel cot or bassinet and clip the mobile to it (Fig. 4).  
**Note:** Do not attach the mobile to a soft material only edge.
3. Turn the ring at the bottom of the connector arm clockwise to tighten (Fig. 4).  
**Note:** Adjustable connector arm fits most play yards or travel cots, strollers and bassinets.  
**Check that the mobile is completely secure. Make sure that the connector arm is tightly secured to the Pack & Play / travel cot or bassinet and that it doesn't swing.**
4. Loop the Velcro strap through the plastic handle of the mobile and secure it by pressing both sides together (Fig. 5).

### Attaching your Take-Along Mobile™ to your infant carrier (using the Velcro straps)

- Note:** Do not use with the connector arm. To dismantle the connector arm, open the Velcro strap and remove it.
1. Wrap the strap around the infant carrier handle and thread the end through the plastic buckle (Fig. 6).
  2. Secure the strap by pressing both sides together.

### Attaching your Take-Along Mobile™ to your stroller (using the alligator clip)

1. Thread the Velcro strap through the loop of the alligator clip (Fig. 7).
2. Thread the Velcro strap through the plastic buckle and secure it by pressing both sides together (Fig. 8).
3. You can now clip the Take-Along Mobile™ to the canopy of your stroller (Fig. 9).

### OTHER BATTERY INFORMATION:

- We recommend alkaline batteries for longer battery life.
- Do not mix old and new batteries.
- Do not mix alkaline, standard (carbon-zinc) or rechargeable (nickel-cadmium) batteries.
- Non rechargeable batteries are not to be recharged.
- Rechargeable batteries are to be removed from the unit before being charged.
- Rechargeable batteries are only to be charged under adult supervision.
- Only batteries of the same or equivalent type as recommended are to be used.
- Batteries are to be inserted with the correct polarity.
- The supply terminals are not to be short-circuited.
- Check that all contact surfaces are clean and bright before installing batteries.
- Batteries should be replaced by adults only.
- Exhausted batteries are to be removed from a product.
- Do not burn batteries. Dispose of batteries in a safe and appropriate manner.
- Install new batteries and retry function before calling Consumer Relations on electronics.
- Uses 3 AA/LR6 (1.5V) batteries (not included).

### Operating the Take-Along Mobile™

The mobile can be set to one of three modes:  
OFF / ON / MUTE (Fig. 10).

1. Slide the operating switch to the "ON" position. 30 minutes of continuous music will start playing and the mobile will start turning. All 5 tunes of approximately one minute each will play consecutively. At the end of 30 minutes of play, the mobile will turn itself off. To continue playing slide the switch to "OFF" and then to "ON" again.
2. To operate your mobile without music, slide the operating switch to the "MUTE" position. To stop the mobile, slide the switch back to the "OFF" position.
3. At the end of play, slide the switch to the "OFF" position.

### Care & Storage:

- Use a damp cloth to wipe clean.
- DO NOT submerge any part of the product in water.
- Remove batteries when stored for long periods of non-use.

### FCC STATEMENT (UNITED STATES ONLY)

This device complies with Part 15 of the FCC Rules. Operation is subject to the following two conditions:

1. This device may not cause harmful interference, and
2. This device must accept any interference received, including interference that may cause undesired operation.

### RADIO AND TELEVISION INTERFERENCE

This equipment has been tested and found to comply with the limits for a Class B digital device, pursuant to Part 15 of the FCC rules. These limits are designed to provide reasonable protection against harmful interference in a residential installation. This equipment generates uses and can radiate radio frequency energy and, if not installed and used in accordance with the instructions, may cause harmful interference to radio communications. However, there is no guarantee that interference will not occur in a particular installation. If this equipment does cause harmful interference to radio or television reception, which can be determined by turning the equipment off and on, the user is encouraged to try to correct the interference by one or more of the following measures:

- Reorient or relocate the receiving antenna.
- Increase the separation between the equipment and the receiver.
- Connect the equipment into an outlet on a circuit different from that to which the receiver is connected.
- Consult the dealer or an experienced radio/TV technician for help.
- Changes and Modifications not expressly approved by the manufacturer or registrant of this equipment can void your authority to operate this equipment under Federal Communications Commission's rules.

